

LIGHTWEIGHT ABRASIVE RAIL SAW

mtz
350 S
400 S
PATENTED



Exceptional cutting performance

Unmatched comfort for the operator



Reinforced protection

Half the maintenance

20% more disc life

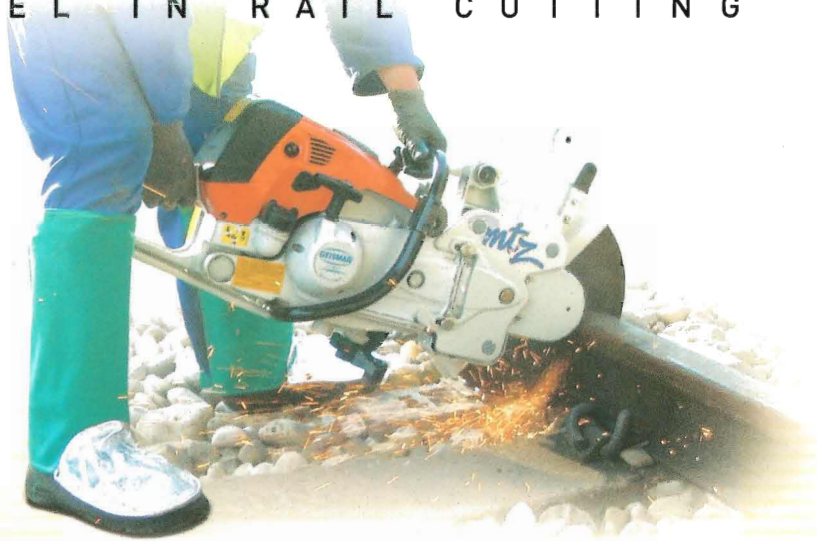
Track laying & maintenance

A NEW LEVEL IN RAIL CUTTING






A NEW LEVEL IN RAIL CUTTING




The new Abrasive Rail Saw has been developed in close partnership between **GEISMAR** and **STIHL** using the latest technology.

The lightweight Abrasive Rail Saw MTZ offers:


● **exceptional cutting performance:**


 with cutting **times** amongst the **ultra-fast**;
average cutting time: 75 to 90 seconds according to rail type (source SNCF)

 **accuracy** meeting the most demanding standards;
less than 1% horizontal or vertical deviation.

● **unmatched comfort for the operator:**

 with a **patented Comfort Cushion™** system
which **reduces intense vibrations** during rail cutting;
vibrations level (acceleration handle): ≈ 6.2 m.s⁻²

 **noise levels reduced** by a newly improved silencer;
acoustic pressure level (when cutting): ≈ 102 dB(A)

 the **ultra-light MTZ** is amongst the **lightest of machines**;
less than 17 kg - 40 lbs.

● **important productivity benefits for the operator:**

 **extended disc life** (up to 20% extra);

 **patented air filtration** fitted **with cyclone pre-filtration system** needing **half the maintenance**.

● **safety meeting the most strict of standards*:**

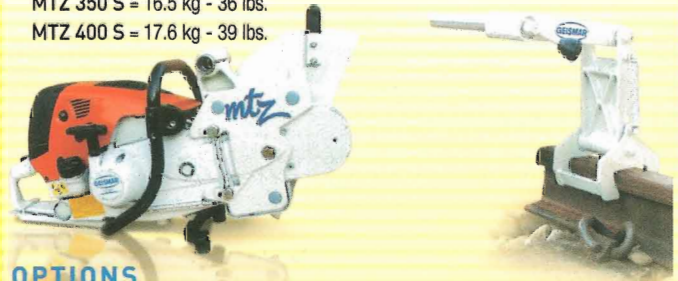
from the start, the **MTZ** has been designed with **safety in mind**:
turn around system, petrol cap to avoid pressure build up, throttle trigger interlock, protection plate on engine base, etc...

* MTZ 350 AS approved by the SNCF with ref: IMT 07038

TECHNICAL DATA

- Petrol engine **Stihl TS 800**, 2-stroke, electronic high energy sparks ignition, triple air filtration with cyclone pre-filtration:6.8 HP (5 kW) at 9 000 rpm
- Filter life: ≈ 14 h
- Fuel tank capacity: 1.2 l - 0.31 gal (US)
- Petrol consumption: 1.7 l/h - 0.45 gal/h (US)
- Abrasive disc: MTZ 350 S = 350 mm - 14" (diameter)
MTZ 400 S = 400 mm - 16" (diameter)
- Abrasive disc spindle diameter: 22.2 or 25.4 mm - 7/8" or 1" (to be specified when ordering)
- Dimensions: MTZ 350 S: 760 x 315 x 430 mm - 30" x 12" x 17"
Lenght x Width x Height (approx.) MTZ 400 S: 790 x 315 x 455 mm - 31" x 12" x 18"

- Weight of rail saw without guiding support:
MTZ 350 S = 16.5 kg - 36 lbs.
MTZ 400 S = 17.6 kg - 39 lbs.
- Weight of guiding support: 6.8 kg - 15 lbs.



OPTIONS

- Engine automatic cut-off device model **MTZ 350 AS** (The machine stops once it is released from its guiding support) or **MTZ 400 AS**
- Combined vice for flat bottom rail and grooved rail

CONSUMABLES

- Abrasive disc: **MTZ 350 S** = 350 x 4 x 22.2 or 25.4 mm
Diameter x Thickness x Bore (approx.) 14" x 5/32" x 7/8" or 1"
MTZ 400 S = 400 x 4 x 22.2 or 25.4 mm
16" x 5/32" x 7/8" or 1"

A wide choice of accessories are available on request

YOUR CONTACT

www.geismar.com

HEAD OFFICE

GEISMAR
113 bis, avenue Charles-de-Gaulle,
92200 **Neuilly sur Seine** - France
● Tel.: +33 (0)1 41 43 40 40 ● Fax: +33 (0)1 46 40 71 70
● E-mail: geismar@geismar.com

FACTORIES

GEISMAR
5, rue d'Altkirch,
68006 **Colmar** cedex - France
● Tel.: +33 (0)3 89 80 22 11 ● Fax: +33 (0)3 89 79 78 45
● E-mail: colmar@geismar.com



Illustrations may include optional equipment. Actual performance depends on temperature, elevation and other factors. The descriptions herein are for the purpose of identification of the equipment. Masses, dimensions, forces, etc. are approximate. We reserve the right to modify design and specification in the light of continuing development. ED7/07 - N° SIREN 562 076 117 00026 - Printed in France